

***Rolling Grilles
Side Folding Enclosures
Counter Shutters
Aluminum Shutters***



Quality Not Compromised By Speed



TABLE OF CONTENTS

Industrial / Commercial

AT-9HC & AT-9SHC

LXR - HC

PFR - HC/SHC

S-2 - HC

Retail

AT-9

LXR

PFR

LIGO

S-2

Side-Folding Doors

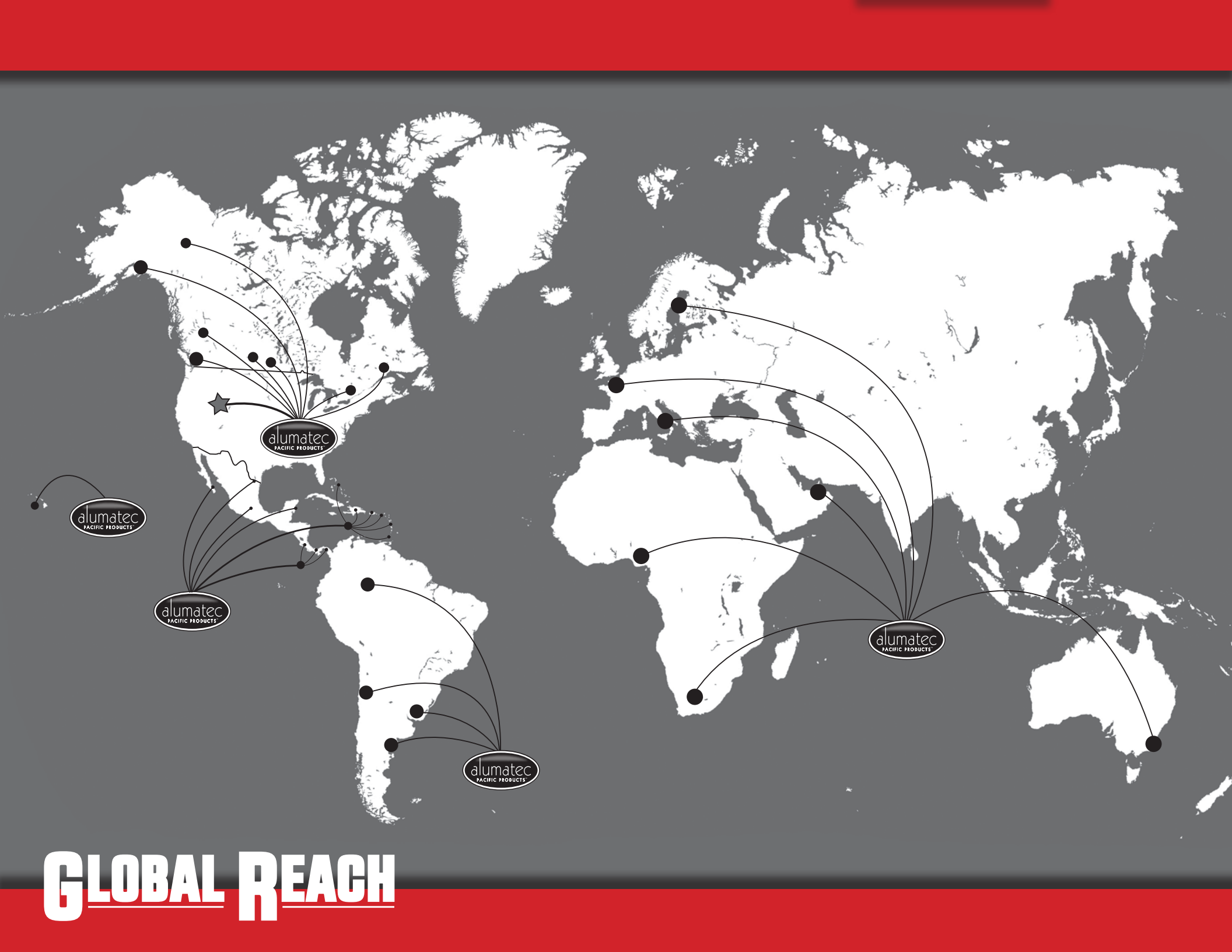
ST-12

PFS

LXS

SAS-7 *(Standard Panel Width 7" Also Available in 4.5" & 12" Panels)*

Pocket Door & Frame



GLOBAL REACH

COMMERCIAL / INDUSTRIAL **SOLUTIONS**

drumatec

PACIFIC PRODUCTS™

High Cycle Grilles required in high traffic applications and when remote access is required. High cycle grilles will allow airflow, visibility and duration for parking garage and any vehicle entry and exit applications.

AT-9HC (100K cycle)

- Zinc plate copper eyelet construction vertical link assemblies
- Sleeved horizontally every 8th rod
- 9" (3" & 6" available) on center link spacing with .125 thick center link sandwiched by two .080 thick double links
- 3" deep high cycle aluminum guide with rigid PVC wear-strips
- 100K cycle-life counterbalance spring assembly
- Heavy duty commercial grade 100K+ cycle flange bearing



AT-9SHC (250K cycle)

- Zinc plate copper eyelet construction vertical link assemblies
- Sleeved horizontally every 4th rod
- 9" (3" & 6" available) on center link spacing with .125 thick center link sandwiched by two .080 thick double links
- 3" deep high cycle aluminum guide with rigid PVC wear-strips
- 250K cycle-life counterbalance spring assembly
- Heavy duty commercial grade 250K cycle flange bearing
- Spring-less barrel assembly (eliminating spring assembly cycle-life)
- GAPOSA™ 21rpm Safety Brake (to prevent free-fall)



LXR-HC

Our high cycle model LXR-HC offers 100% enclosed curtain shutter with a high end look, yet constructed for heavy duty performance. The LXR line is manufactured for exterior performance with 3/32" thick clear polycarbonate windows, allowing your space to be fully enclosed without losing light and visibility. Standard high cycle roll-up doors include heavy duty 3" deep guides with PVC wear-strips, 100K+ cycle-life counterbalance springing, and high cycle / high yield flange bearings to provide years of maintenance free operation.

STANDARD FEATURES

- 100 % enclosed curtain
- PVC windows framed with PVC clips to protect and prevent windows from roll marks and damage.
- Accommodates openings up to 28' wide and 18' tall
- Prepared for face of coil motor operator
- Clear anodized curtain, bottom rail, and guides
- 3/32" Clear polycarbonate windows
- High cycle guides, springing and flange bearings are standard to achieve a minimum 100,000 Cycle-life
- 300K cycle-life (Model LXR-SHC) *spring-less barrel assembly, Euro-drive gear-head motor package, safety brake

ADDITIONAL FINISHES:

- Dark bronze or Black anodized
- White DuraCoat® finish
- Custom powder coating (reference Alumatec's RAL color catalogue)

WINDOW OPTIONS:

- UV Treated polycarbonate (Model LXR-HC-E) with 10-year warranty against discoloration
- Custom polycarbonate tinting



PFR-HC

PERFORATED ROLL-UP
PFR HC / PFR SHC

STANDARD FEATURES:

- Manual push-up/pull-down operation
- Clear anodized curtain, bottom bar, and guides
- Perforated slats with BB holes at 1/4" round (50%+ transparency)
- Keyed cylinder locking (exterior) with thumb turn cylinder (interior)
- Minimum 25K cycle life

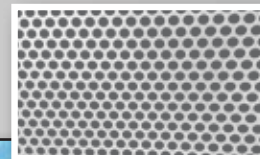
AVAILABLE FINISHES:

- Clear anodized (standard)
- Dark bronze anodized
- White DuraCoat® finish
- Custom powder coating

*PVC window seal frames available in white, gray or black finish

For openings which require maximum security while allowing airflow, the PFR is your best option. Designed with perforated slats, this roll-up curtain offers a clean look desired by high-end retailers and conventional spaces alike. Allowing partial visibility the perforated pattern also contributes additional curtain strength and reach-through theft prevention.

PFR HC (100K Cycle) / PFR SHC (250K Cycle)



PERF PATTERN





Our S2-HC is an optimal choice for exterior drive through applications, where tenants are living above the garage entrance and exit. Our S2 extruded aluminum shutter operates with less noise than its rolling steel counterparts, and an optimal choice for residential parking garages, and larger openings where a solid shutter is required.

S-2 HC

STANDARD FEATURES:

- Prepared to accept high cycle motor operator
- 100% enclosed shutter design
- Accommodates openings up to 28' wide and 20' tall
- Wind lock every 6th panel
- Clear satin anodized curtain, double aluminum angle bottom rail and guides
- Solid aluminum interlocking slats 3½" in height
- High cycle / high yield enclosed flange bearings
- High cycle 3" deep guide package with PVC wear-strips



CYCLE-LIFE OPTIONS:

- Minimum 25K cycle-life springing (Model: S2)
- 100K cycle-life (Model: S2-HC)
- 250K cycle-life (Model S2-SHC)

AVAILABLE FINISHES:

- Clear Satin anodized finish (standard)
- White DuraCoat® finish
- Custom powder coating
(reference Alumatec's RAL color catalogue)



S-2 HC

LARGE SHUTTER / HIGH CYCLE

RETAIL

SOLUTIONS



alumatec
PACIFIC PRODUCTS™

AT-9

ROLL-UP GRILLE / RETAIL

As our most popular roll-up grille, the AT-9 is a perfect choice for any storefront or perimeter where visibility and ventilation are required. It has been specifically designed to provide long-lasting security with trouble-free operation for store associates. Ideal in malls, airports, retailers and hotels, this model offers optimal product merchandising without monopolizing valuable space.

STANDARD FEATURES:

- Manual push-up/pull-down operation
- Clear opening between rods of 2" (on center) tall by 9" (on center) wide
- Mill finished curtain
- Clear anodized bottom bar
- Keyed cylinder locking (exterior) and thumb-turn cylinder (interior)
- Clear anodized guides (pair) with mo-hair inserted to eliminate metal on metal contact
- Minimum 25K cycle life



AVAILABLE FINISHES:

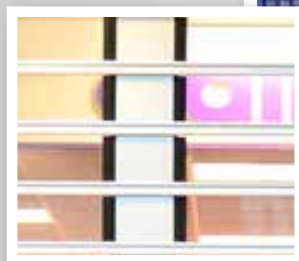
- Mill (standard)
- Clear anodized
- Dark bronze anodized
- Black anodized
- Custom powder coating



LXR

POLYCARBONATE ROLL-UP

A standard for high-end retailers, this roll-up grille is manufactured with polycarbonate windows, allowing your space to be fully enclosed without losing product visibility. Specifically constructed to provide reach-through theft prevention and smooth operation, you won't find a more durable form of stylish security in the industry.



STANDARD FEATURES:

- 100 % enclosed curtain
- PVC window frame to protect and prevent windows from wear
- Accommodates openings up to 28' wide and 15' tall
- Manual push-up/pull-down operation
- Clear anodized curtain, bottom bar, and guides
- 1/16" Clear polycarbonate windows
- Minimum 25K cycle life

AVAILABLE FINISHES:

- Clear anodized (standard)
- Dark bronze anodized
- Black anodized
- White DuraCoat®
- Custom powder coating
- Custom polycarbonate tinting

STANDARD FEATURES:



- 093" aluminum sheeting with slotted BB holes at 1/4" round.
- Perforations patterned for 60% transparency.
- Choice of operation: manual push-up pull-down, reduced drive chain hoist, or hand crank.
- Motors are recommended on openings over 135 square feet.

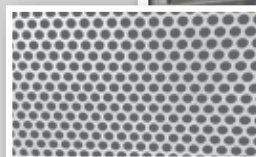
AVAILABLE FINISHES:

- Mill (standard)
- Clear anodized
- Dark bronze anodized
- Black anodized
- Custom powder coating

PFR

PERFORATED ROLLING SHUTTER

Alumatec Pacific Products model PFR rolling shutter offers a perfect combination of visibility and airflow without compromising storefront security. Manufactured with perforated aluminum slats, the PFR provides the high-end style of protection desired by elite retailers. Each shutter is designed to withstand reach-through theft and vandalism for any interior or exterior application.



PERF PATTERN



PFR

LIGO SHUTTER



All new redesigned LIGO Shutter from Alumatec Pacific Products.

LIGO COUNTER SHUTTER is the perfect choice for the following projects and conditions:

- Countertop applications
- Storefront applications
- Behind glass storefront applications
- Self-mounting conditions with finished extruded aluminum support guides to match any storefront window mullion



REDESIGNED UPGRADES INCLUDE:

- New H-Guide designed with multiple mounting options (face of wall, between jamb or self-supporting)
- Aluminum slat thickness .056 (10% thicker than industry standards)
- Coil plates designed to mount to back of guide dimension to allow clearance for multiple operating options (manual, sprung, crank gear, and internal motor operator)
- Clean more esthetically pleasing design allows for more simple installation
- New slat profile design will accept stop heights up to 11'-3" to remain on 8" square or coffered head plate for maximum opening height with smallest coil box required
- LIGO shutters can be ordered and shipped around barrel, pre-loaded springing, with hood cover attached if jobsite conditions permit
- Simple and faster installation



S-2

LARGE SHUTTER



Our S-2 model shutter is designed for larger openings that require a solid shutter, using finished interlocking aluminum slats to minimize visibility and unwanted airflow. The S-2 is an optimal choice for both indoor and outdoor security at stadiums, schools, hospitals, and industrial spaces. Frequently used for high-cycle applications such as parking garages and is popular with high-end retailers for its clean and customizable surface.

AVAILABLE FINISHES:

- Clear Satin anodized finish (standard)
- White DuraCoat® finish
- Custom powder coating (reference Alumatec's RAL color catalogue)

STANDARD FEATURES:

- Manual push-up/pull-down operation
- 100% enclosed curtain
- Accommodates openings up to 28' wide and 20' tall
- Manual push-up/pull-down operation
- Clear anodized curtain, bottom bar and guides
- Solid aluminum interlocking slats (large 3½" panels)
- Keyed cylinder locking (exterior) with thumb turn cylinder (interior)
- Minimum 25K cycle-life



STANDARD FEATURES:

- Manual side sliding - operation
- Accommodates openings up to 200' wide by 16' tall
- Clear anodized curtain, mullions, and track
- Keyed cylinder locking (interior or exterior)
- Opening aperture between rods of 12" tall by 2 1/4" wide
- V2 Track (1 3/4" wide by 1 3/4" tall) with adjustable zinc steel roller and stems
- 14" - 30°, 45°, and 90° track radius standard with options for custom curves

Commonly found in malls, restaurants, and office spaces, side-folding gates are useful wherever separation is needed. The ST-12 is an attractive option as it can easily fold back out of view, leaving a clean and unobstructed space. Additionally, this model requires no headroom or floor track and can accommodate any curved layout with our custom radius options. While its open pattern allows unrestricted light and airflow, it also maintains a lightweight design that is unsurpassed in strength and durability.

AVAILABLE FINISHES:

- Clear Anodized (standard)
- Dark Bronze (Anodized / DURACOAT®)
- White #160 (DURACOAT® finish)
- Custom Powder Coating*

*Refer to custom powder coating RAL color chart.
Can be found online at www.alumatecpp.com or from your Alumatec Pacific Authorized Door Dealer.



PFS

Perforated Side-Folding Accordion Door

Alumatec Pacific Products model PFS side folding door is set apart by its perforated aluminum panels. Its advanced design uses perforations to provide protection against reach-through theft and vandalism while maintaining a clear view of your products and merchandising.

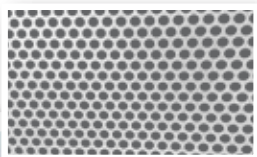
In addition to surpassing competitors in both strength and durability, the PFS is manufactured using adjustable roller bearings and stems to aid with uneven surfaces and to help maintain clearances after installation. Accommodating any exterior or interior application this accordion style door promises sophisticated security and performance.



AVAILABLE FINISHES:

- Aluminium -
Clear, Bronze, Black
- Aluminium Perforated Panels -
Clear, Bronze, Black
- Custom Powder Coating*

*Refer to custom powder coating RAL color chart.
Can be found online at www.alumatecpp.com or
from your Alumatec Pacific Authorized Door Dealer.



PERF PATTERN



STANDARD FEATURES:

- Accommodates openings up to 16' tall.
- 093" aluminum panels with slotted BB holes at 1/4" round.
- Perforations patterned for 60% transparency.
- 5/16" zinc plated stem bolt (strongest in the industry).
- Adjustable roller bearings and stems for uneven surfaces and to help maintain clearances after installation.
- 14" - 30°, 45°, and 90° track radius standard with options for custom curves



STANDARD FEATURES:

- 99.9% enclosed curtain.
- Accommodates openings up to 16' tall.
- Each piece of polycarbonate is framed to prevent abrasions of the windows, thus maintaining clear visibility of the merchandise even after years of use.
- 14" - 30°, 45°, and 90° track radius standard with options for custom curves



AVAILABLE FINISHES:

- Polycarbonate - Clear, White, Light Gray, Black
- Aluminium - Clear, Bronze, Black
- Custom Powder Coating*

*Refer to custom powder coating RAL color chart.
Can be found online at www.alumatecpp.com or from your Alumatec Pacific Authorized Door Dealer.

Alumatec Pacific Products side folding accordion is a beautiful combination of security and style. Our LXS is manufactured using clear 3/32" polycarbonate windows which provide years of security, aid in temperature control and store cleanliness, and prevent reach through theft. Additionally, this style of door is designed to allow maximum storefront merchandising and product visibility, while providing strength and durability that will outlast any other side folding door.

LXS

Polycarbonate Side-Folding Accordion Door



SAS-7

Commonly used in front of retail storefront glass windows and doors to prevent break-ins through the glass. Also used behind storefront glass and in high end retail to conceal store inventory, or any storefront or area in which requires the highest level of security. For standalone storefront applications, Alumatec has designed our storefront mullion mounted L-Bracket for ease of installation and requires virtually no head-room requirement.

STANDARD FEATURES:

- Manual side-folding operation
- Accommodates openings up to 80' wide by 15' tall
- Clear anodized curtain, mullions, and track
- Keyed cylinder locking (exterior) with thumb-turn cylinder (interior)
- Solid aluminum panels
- V2 Track (1 3/4" wide by 1 3/4" tall) with adjustable zinc steel roller and stems
- 14" - 30°, 45°, and 90° track radius standard with options for custom curves

AVAILABLE FINISHES:

Clear anodized (standard) • White #160 DURACOAT® finish • Dark Bronze Anodized or DURACOAT® Custom Powder Coating*

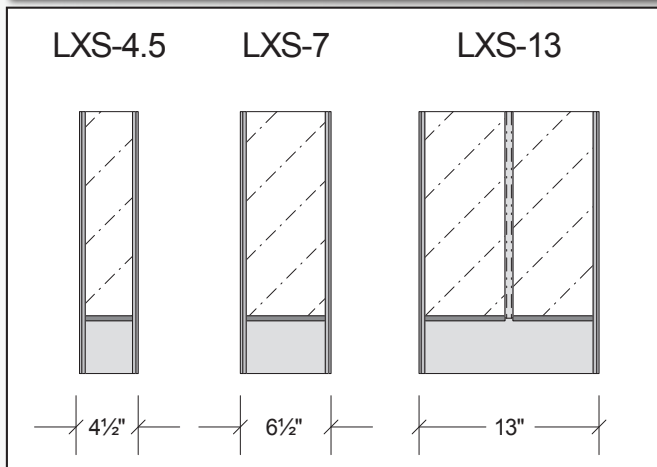
*Refer to custom powder coating RAL color chart. Can be found online at www.alumatecpp.com or from your Alumatec Pacific Products authorized dealer.



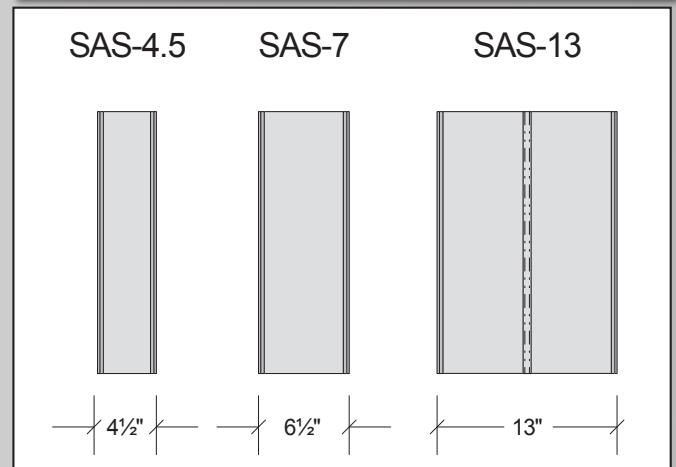
SAS-7

SIDE FOLDING MODEL NUMBERS & PANEL WIDTHS AVAILABLE IN EACH MODEL

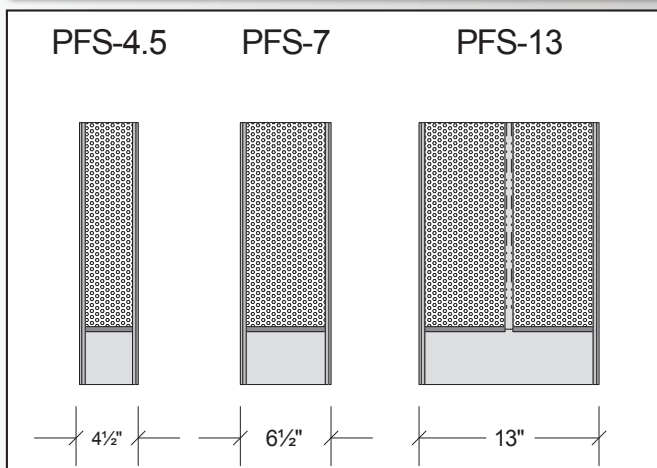
LXS (polycarbonate)



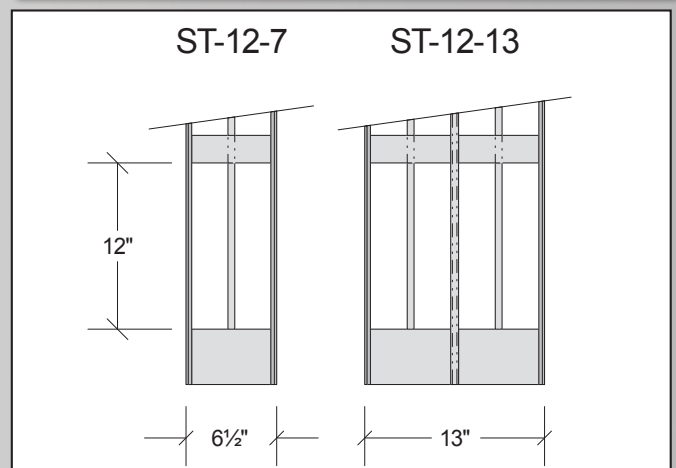
SAS (solid)



PFS (perforated)



ST-12 (open pattern)



POCKET DOOR & FRAME



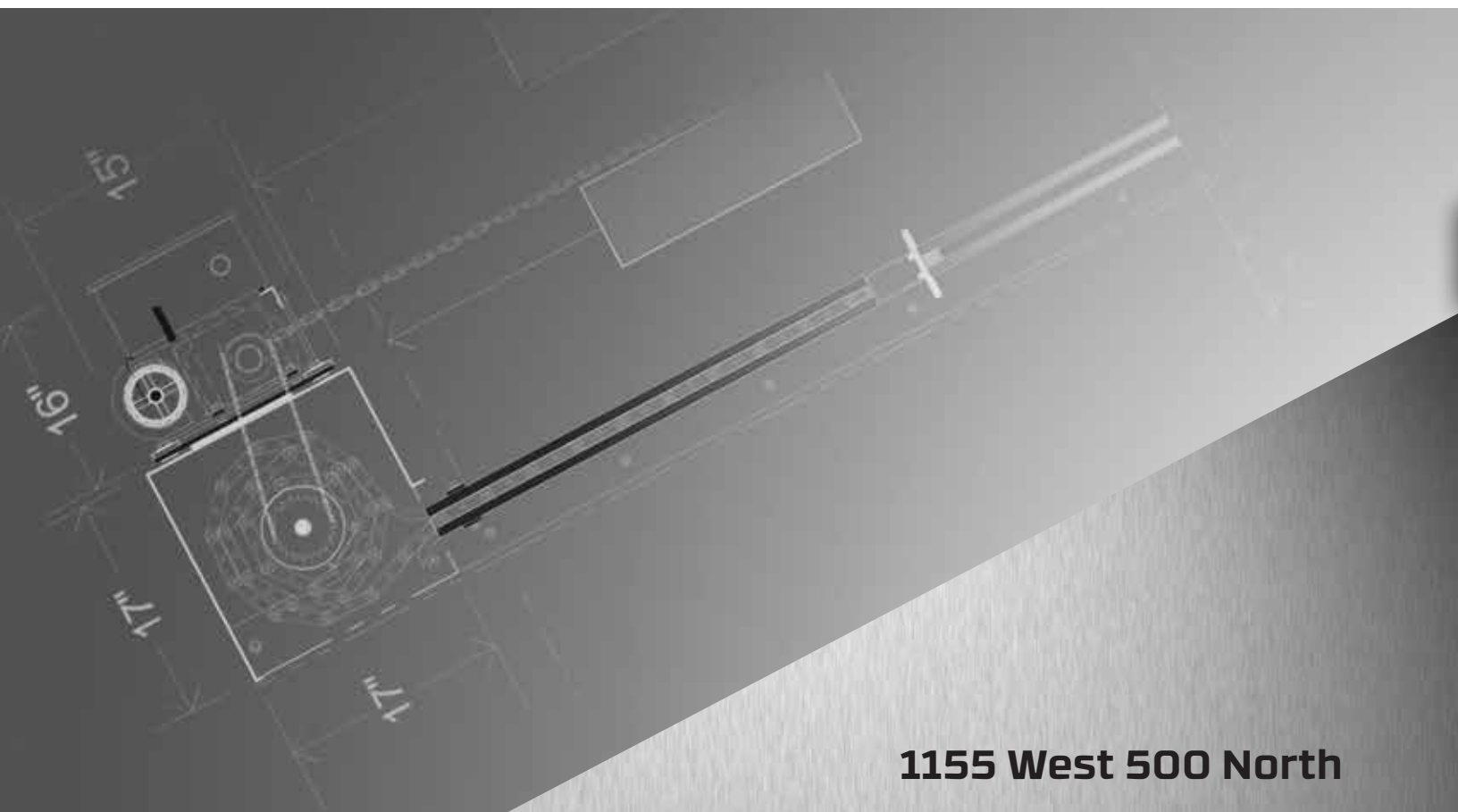
Alumatec Pacific Pocket Door & Frame units are an effective solution to finish off your pocket opening with a professional finish. Designed to discretely conceal your sliding security gate when retracted, our pre-hung pocket door & frame offers a compact storage solution with a sophisticated look. Pocket doors are pre-assembled for ease of installation, while keeping the simplicity of the design and moving parts to a minimum for years of use. Alumatec's pocket doors can be manufactured to accommodate nearly any size opening, and comes with the option of materials, and powder coated finishes. Providing a secure storage compartment for your side-folding gate will help prevent damage to the door while stored, and prolonged life of the security door while locked and concealed in pocket. Commercial grade hinge system with factory installed hook lock is standard, which includes a mortise keyed cylinder to meet your specifications. Particularly suited for retail applications and airports that require all doors to be locked and secured.

STANDARD FEATURES:

- Frame Size: Height up to 144" standard. Width accommodates 10" or 14" pockets. Custom sizing available.
- Best 7 pin, U-Change, Schlage I.C. optional. Material: Primed 16 gauge steel standard.
- Operation: Three hinge system with pull handle/knob.
- Locking: Hook lock with pre-punched frame locking with mortise keyed cylinder
Magnetic Closure Latch.



Industrial / Commercial / Retail



**1155 West 500 North
Centerville, Utah 84014**

P: 877.770.0181 ext 1

F: 801.298.0905

www.alumatecpp.com



see us at
Sweets.com

