



Alumatec Pacific Products™

www.alumatec.com

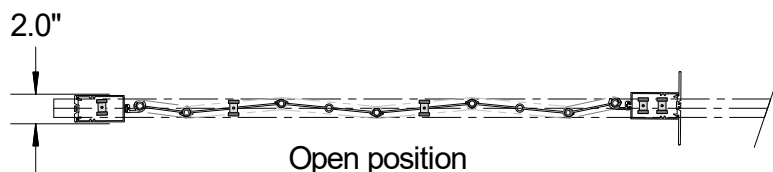
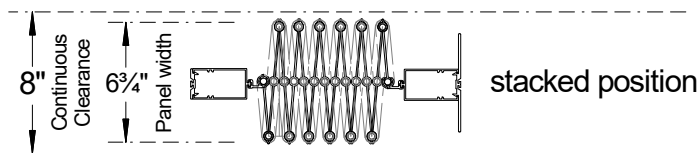
# Product Data Sheet

E Series

ES-18

## PRODUCT DATA

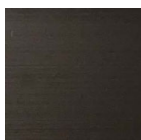
Max Width	125 ft.	38.1
Max Height	15 ft.	4572
Panel Width	7.00"	177.8
Minimum Pocket Width	8.00"	203.2
Weight stacked	5.23 lbs./ft.	2.373kg./m
Weight extended	0.95 lbs./ft.	0.431kg./m
Curtain type	Open Pattern Rod & Link	
Simple Stack Formula	2" per every 12" of opening width	



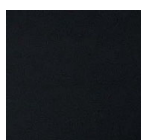
## FINISH OPTIONS



CLEAR



DK. BRONZE



BLACK



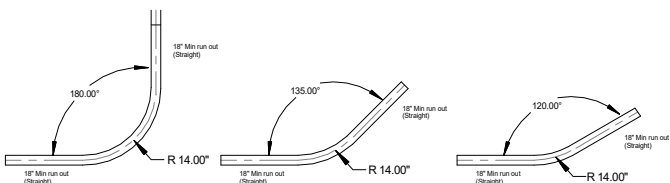
POWDER COAT

## CURVE (RADIUS) DATA

P/N: V390

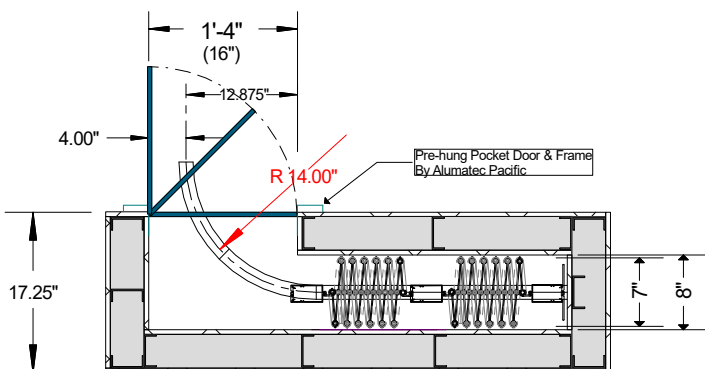
P/N: V345

P/N: V330

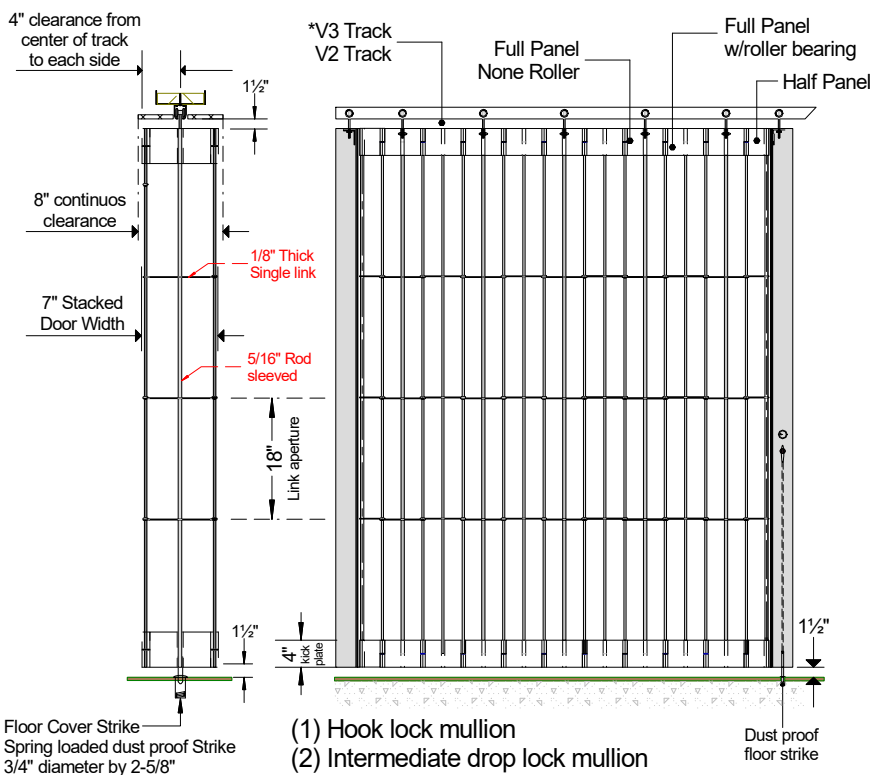
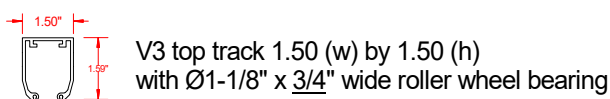


RADIUS	OPPOSITE	14"
90° Degree	180°	●
45° Degree	135°	●
30° Degree	120°	●
Custom	Contact factory with details	

## R-90° Radius inside pocket



## TOP TRACK



Floor Cover Strike  
Spring loaded dust proof Strike  
3/4" diameter by 2-5/8"

Dust proof  
floor strike

- (1) Hook lock mullion
- (2) Intermediate drop lock mullion
- (3) Bi-parting lock mullions
- (4) Top & Bottom locking mullion
- (5) Free-floating trailing edge mullion
- (ST) Stationary mullion (wall connected)

## Straight Shot into pocket

